

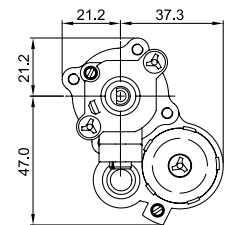
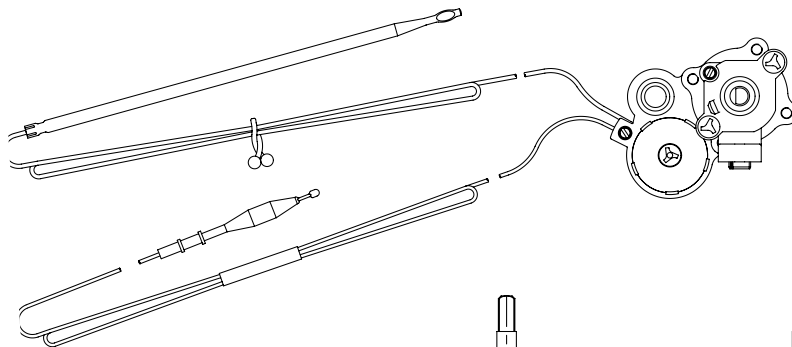
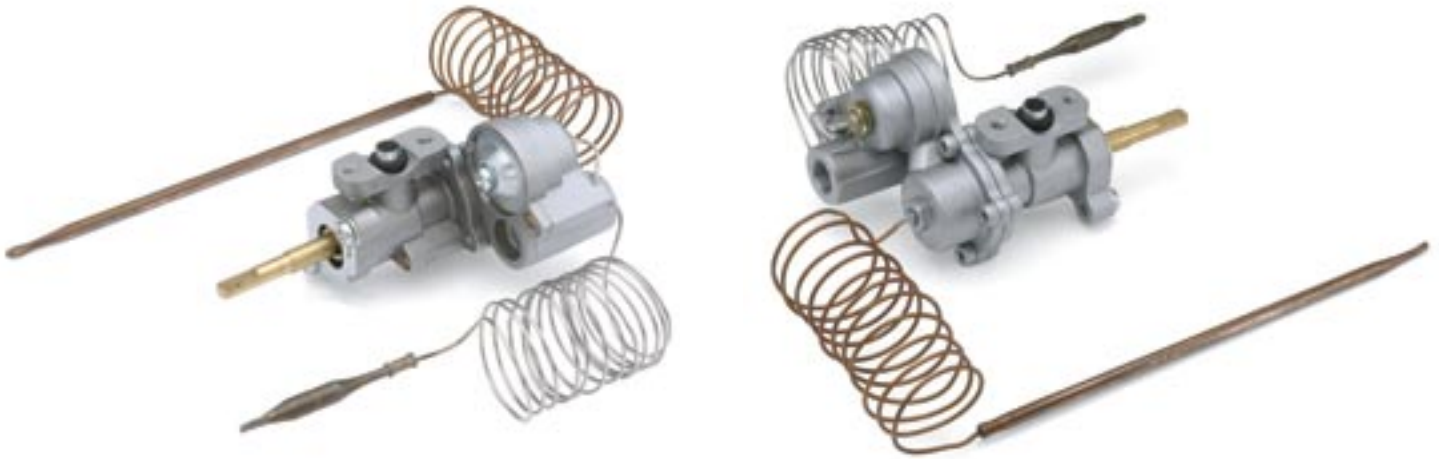
FST Series (Flame supervision thermostat)



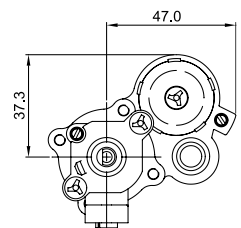
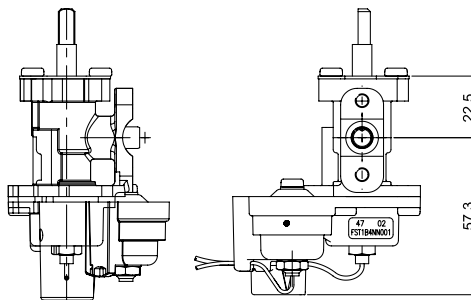
The Flame Supervision Thermostat offers reduced inventory and installation costs to Gas Oven manufacturers.

The unique control combines the functionality of the Diamond H "1100 Series Gas Oven Thermostats" and the Gas Supervision Devices in a single rail mounted unit.

Solenoid versions are available to allow automatic cooking.



FST**3* CONFIGURATION

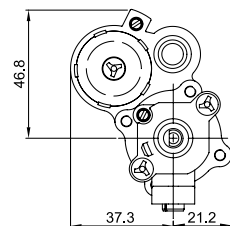
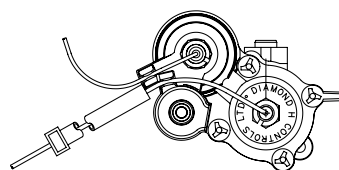


FST**2* CONFIGURATION

There are many options available for the FST. The control body can be arranged in any one of four possible orientations to suit customer requirements.

The customer may also specify:

- I. Spindle length & D size
- II. Outlet fitting type
- III. Capillary length
- IV. Thermostat bypass flow rate



FST**1* CONFIGURATION

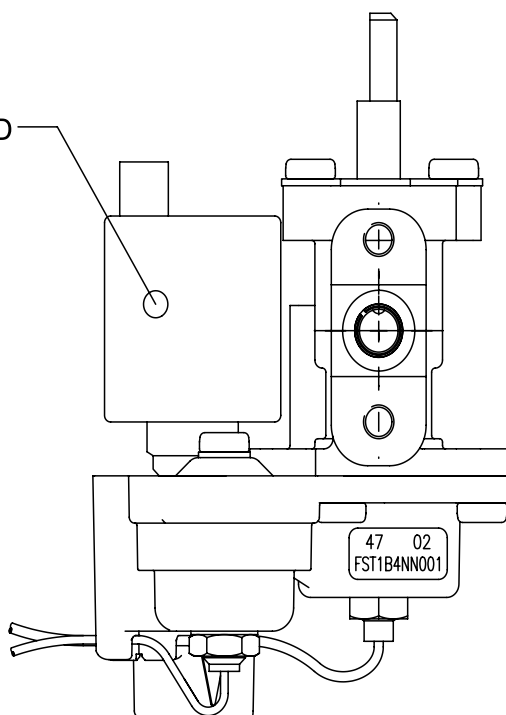
FST Series (Flame supervision thermostat)



SPECIFICATION

Gas	2 nd and 3 rd family.
Full flow capacity	0.255 m ³ /hr air at 2.5mbar pressure drop
Working pressure	10 – 50 mbar
Thermostat temperature range	80°C to 315°C.
Ambient temperature	0°C - 120°C.
Thermostat sensor temperature	315°C max.
Flame sensor temperature	950°C max.
Mounting	Saddle mounting standard configuration (tapped M5).
Mounting attitude	Universal
Outlet	M12 max.
Spindle	To suit customer specification.
Rotation	55° - 295° active dial.
FSD Opening time	<60 seconds.
FSD Closing time	<60 seconds.
Bypass	External. (Thermostat and FSD)
Capillary lengths	To suit customer specification.
Type of device	Group 2

SOLENOID



The FST is also available with an integral solenoid shut off valve that allows the control to be used in conjunction with an oven programmer. This can be fitted with leads and terminations to suit customer requirements